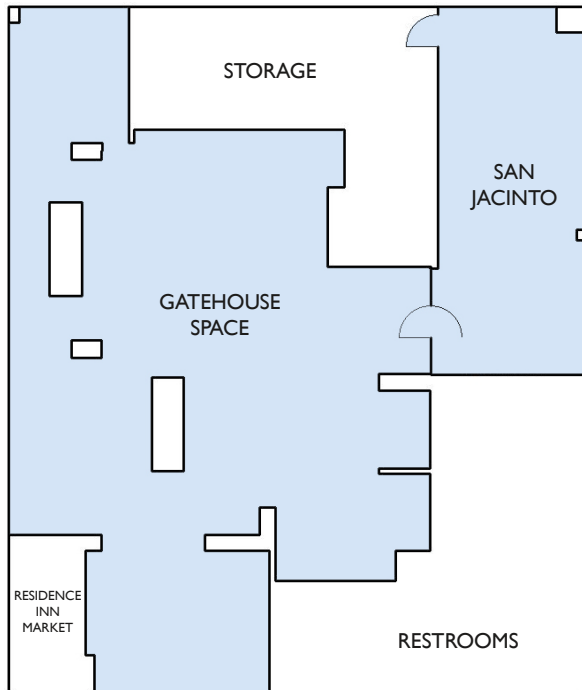
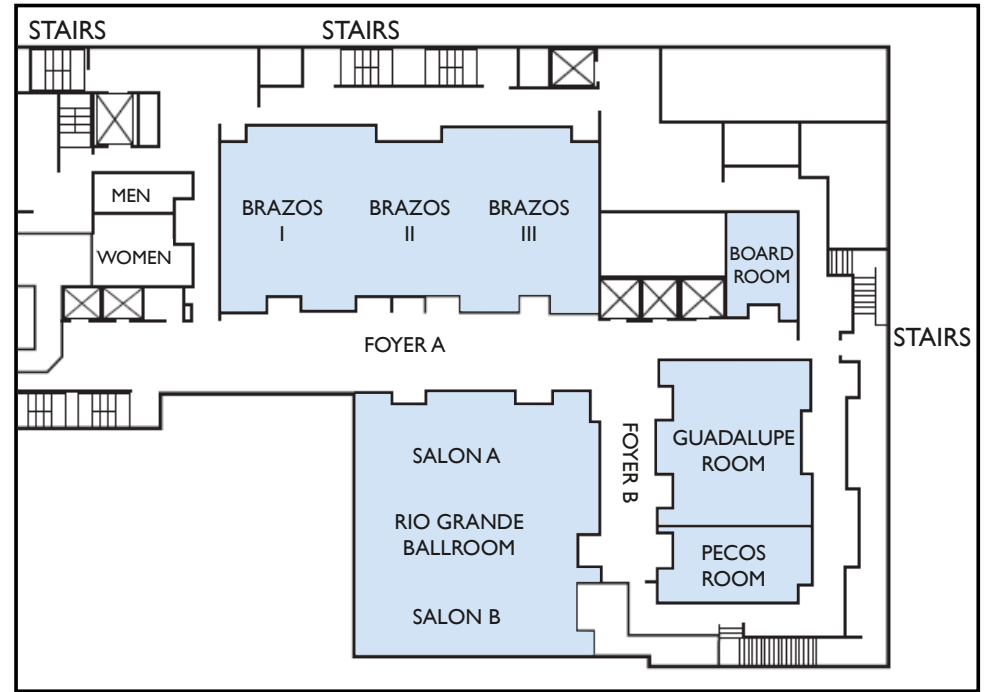




MARRIOTT

AUSTIN DOWNTOWN/CONVENTION CENTER



**CAPACITY**

Function Rooms	Square Feet	Banquet	Theater	Classroom	Reception	Dimensions
Rio Grande Ballroom	2,392	180	280	180	275	46' x 52'/11' 7"
Rio Grande Salon A	1,150	90	140	80	125	46' x 25'/11' 7"
Rio Grande Salon B	1,242	90	140	80	125	46' x 27'/11' 7"
Pecos Room	435	20	40	24	30	29' x 15'/10' 5"
Guadalupe Room	957	80	110	40	75	29' x 33'/10' 5"
Brazos I, II & III	2,511	180	220	165	275	31' x 81'/10' 7"
Brazos I	896	50	80	60	95	32' x 28'/10' 7"
Brazos II	744	40	60	45	85	31' x 24'/10' 7"
Brazos III	896	50	80	60	95	32' x 28'/10' 7"
Boardroom	252	Accommodates up to a 10 person conference				18' x 14'/9' 8"
San Jacinto	525	30	45	24	35	35' x 15'/9' 5'
Rooftop Terrace	1,300	50	-	-	90	61' x 27'
Gatehouse	2,430	90	-	-	100	45' x 54'/9' 5'